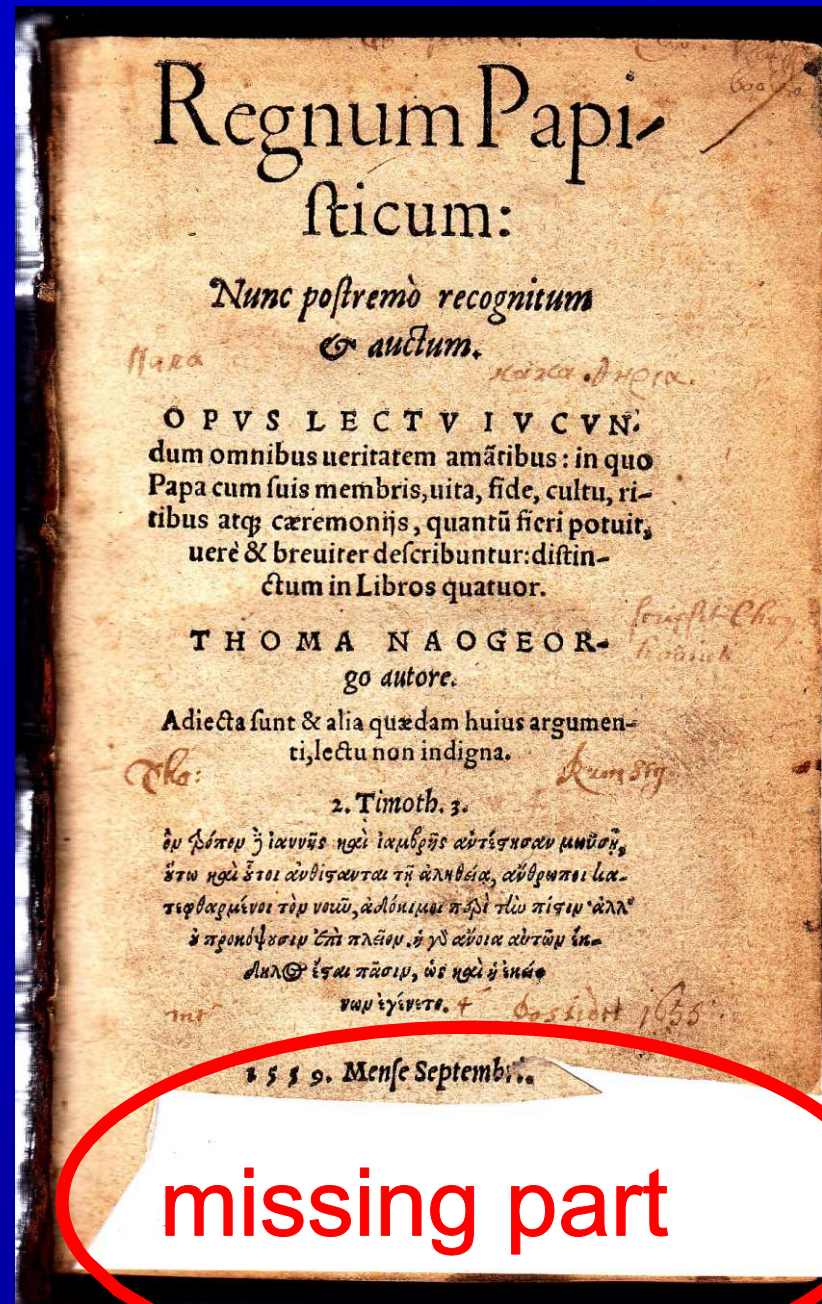


What is Provenance Evidence?

Dr. Jürgen Weber

Klassik Stiftung Weimar /
Herzogin Anna Amalia
Bibliothek

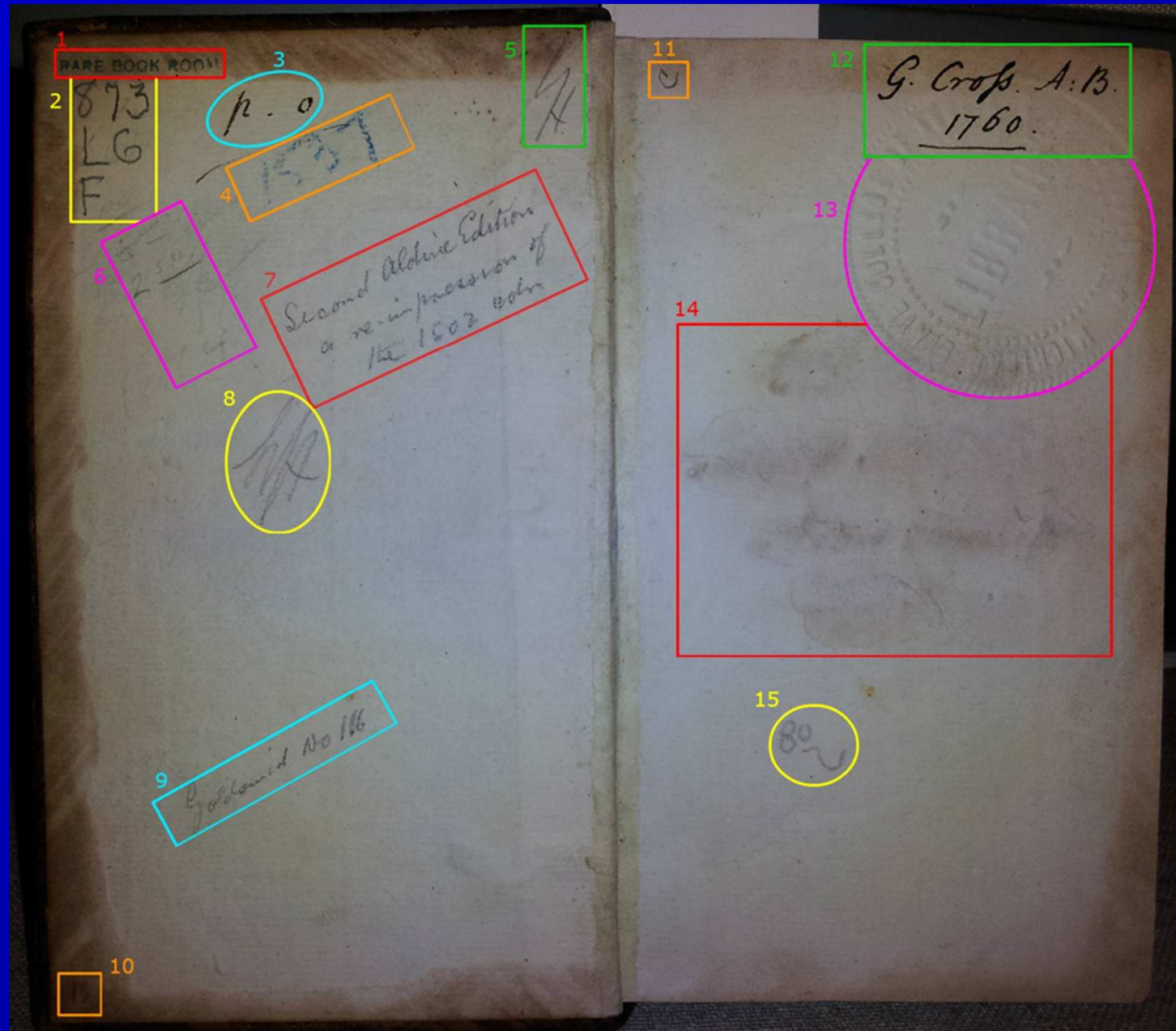
SUB Göttingen,
25 February 2015



What is Provenance Evidence?

1. Contextual Evidence
2. Body of Evidence and Authenticity
3. Evidence Management

No
evidence
without
context



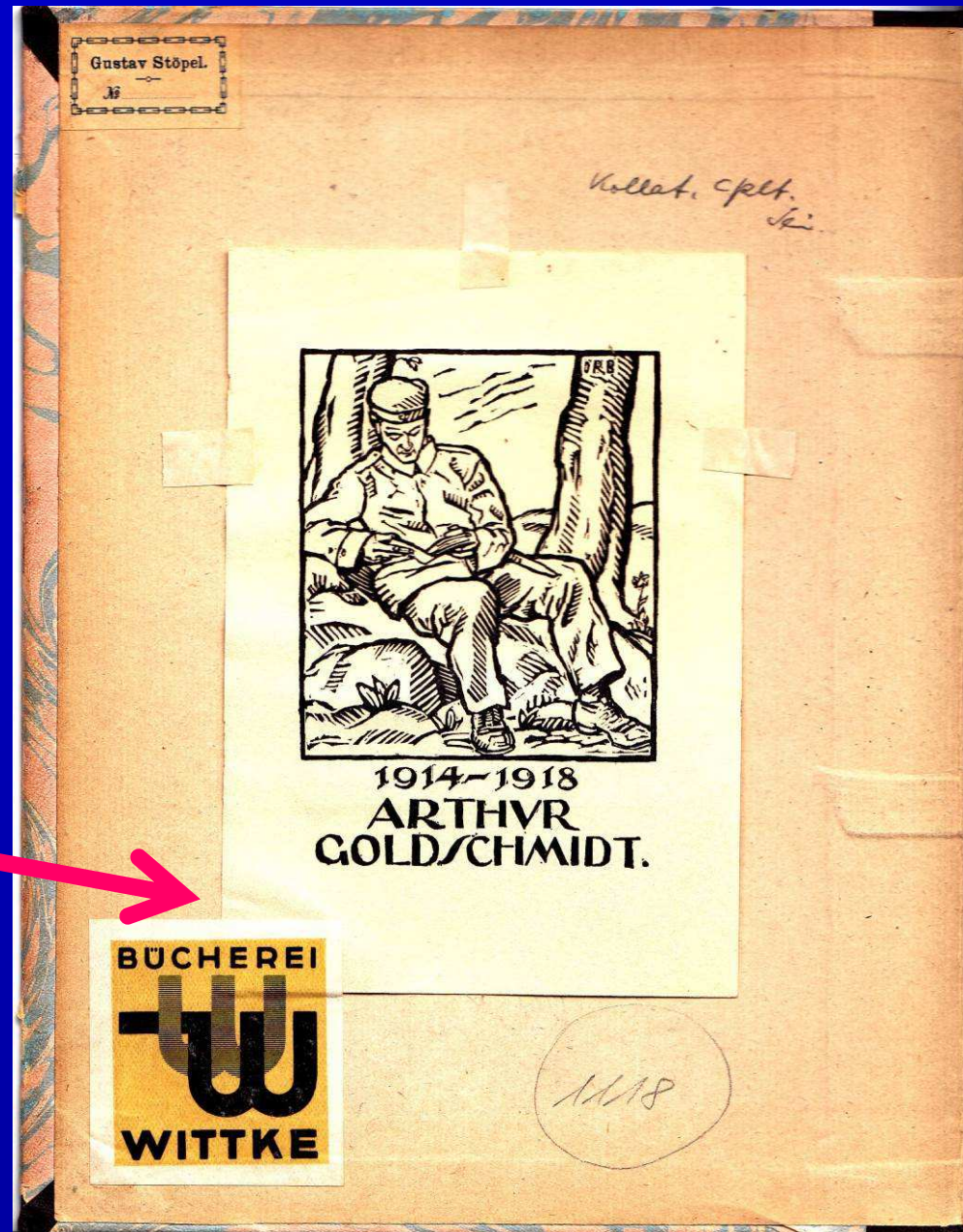
Chain of ownership

overlapping
bookplates

1

2

3



„internal use“

3

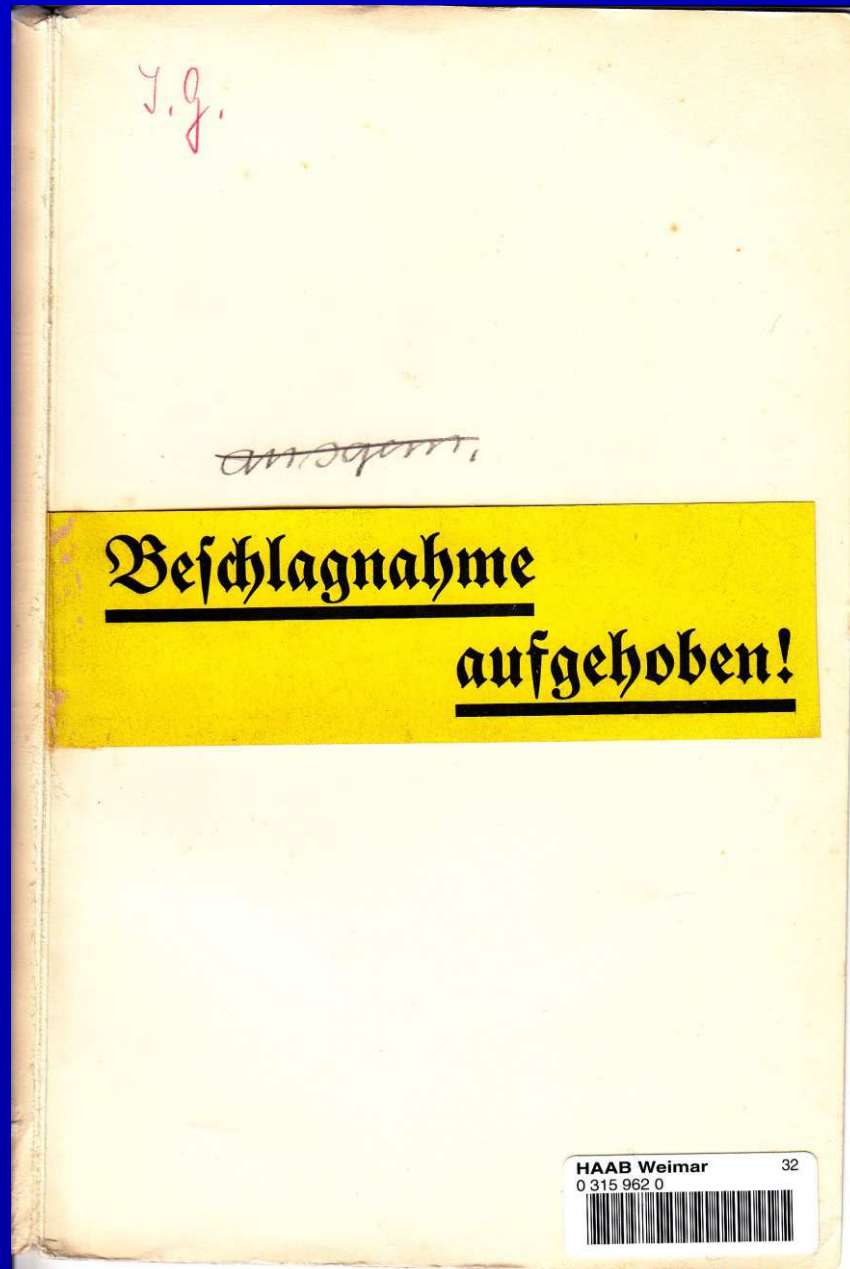
„eliminated“

1

„seizure
cancelled“

2

Chain of
censorship
markers



„Red Point“ as
censorship label

„IG“ – „Interner
Gebrauch

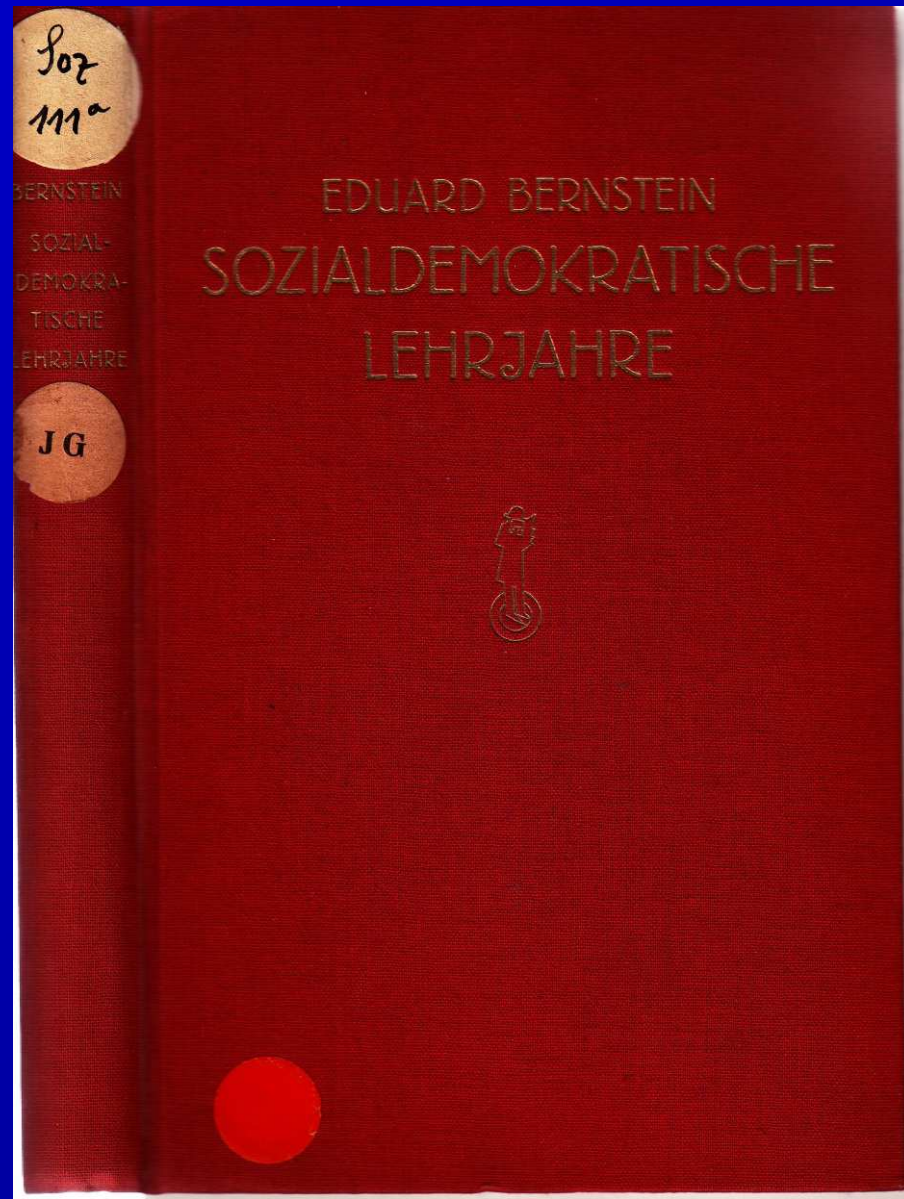
„internal use“
(1948-1990)

censored
(1935-1945)

2

1

↙ shelf mark



„Provenance includes **historical information and function**, which were viewed as essential to determine the **artefact's use** and what implications, if any, were intended or unintended through that use.“

Elliott, R. et al.: Towards a Material History Methodology. In: Material History Bulletin 22 (1985), Fall, pp. 31-40.

Towards Authenticity

Chain of evidence

|

Body of evidence

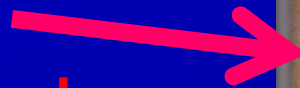
|

Authenticity

Evidence Management

- Detection
- Documentation
- Protection

trace of red
censor-ship label
removed after
1990



Thank you for your attention!

juergen.weber
@klassik-stiftung.de